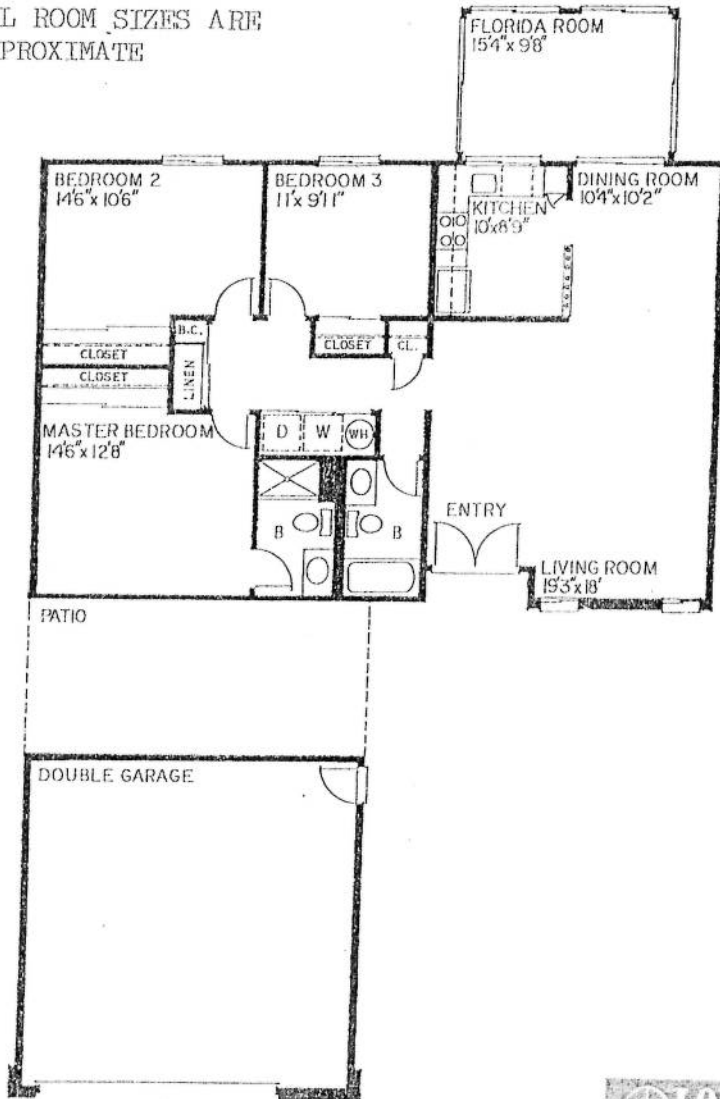


THE BARSTOW

Three Bedrooms, Two Baths, Two Car Garage

ALL ROOM SIZES ARE APPROXIMATE

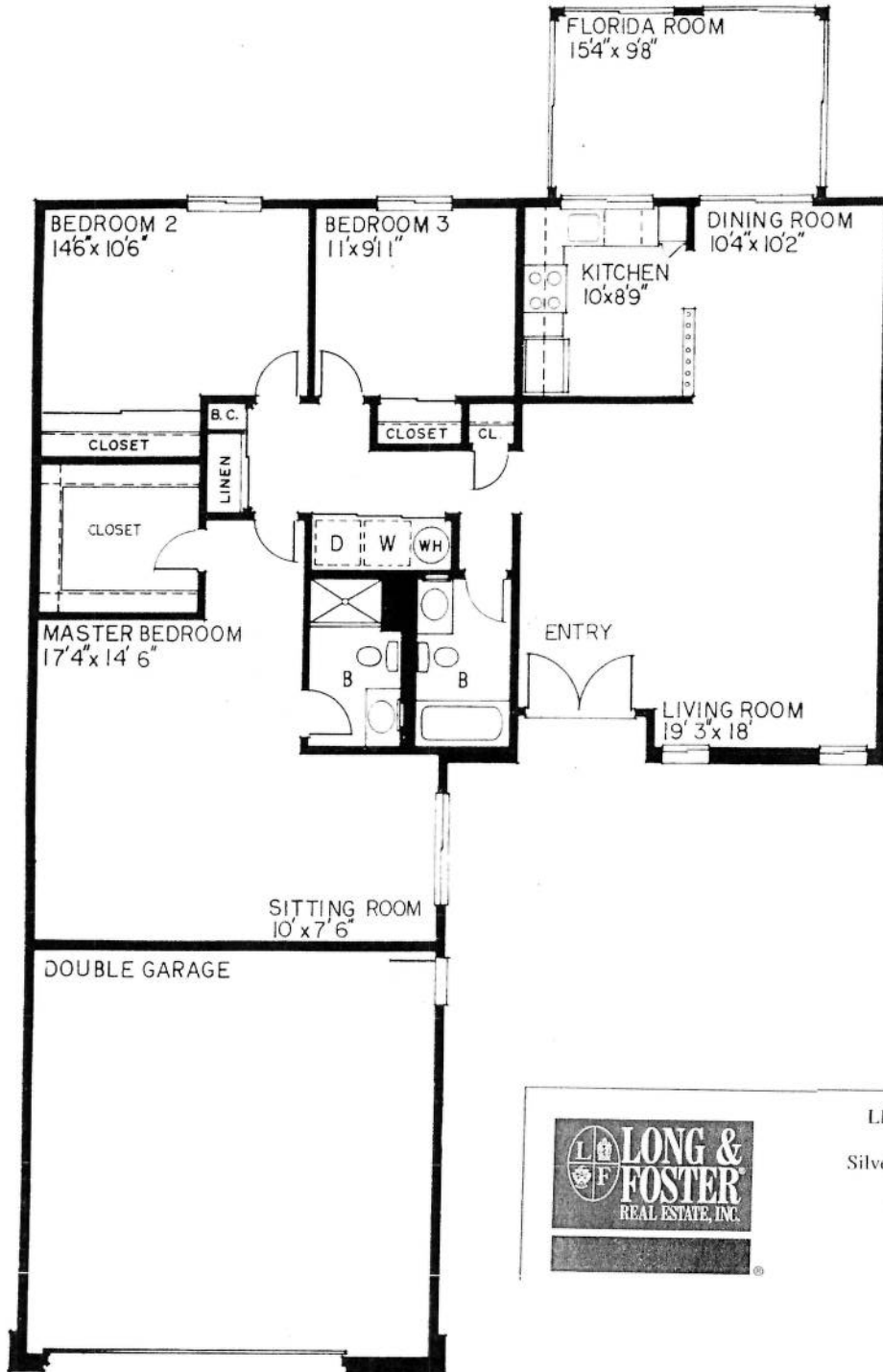


LEISURE WORLD PLAZA
3836 International Drive
Silver Spring, Maryland 20906
Office: 301-598-7500
Office Fax: 301-598-0395

THE BARSTOW A

Three Bedrooms, Two Baths, Two Car Garage

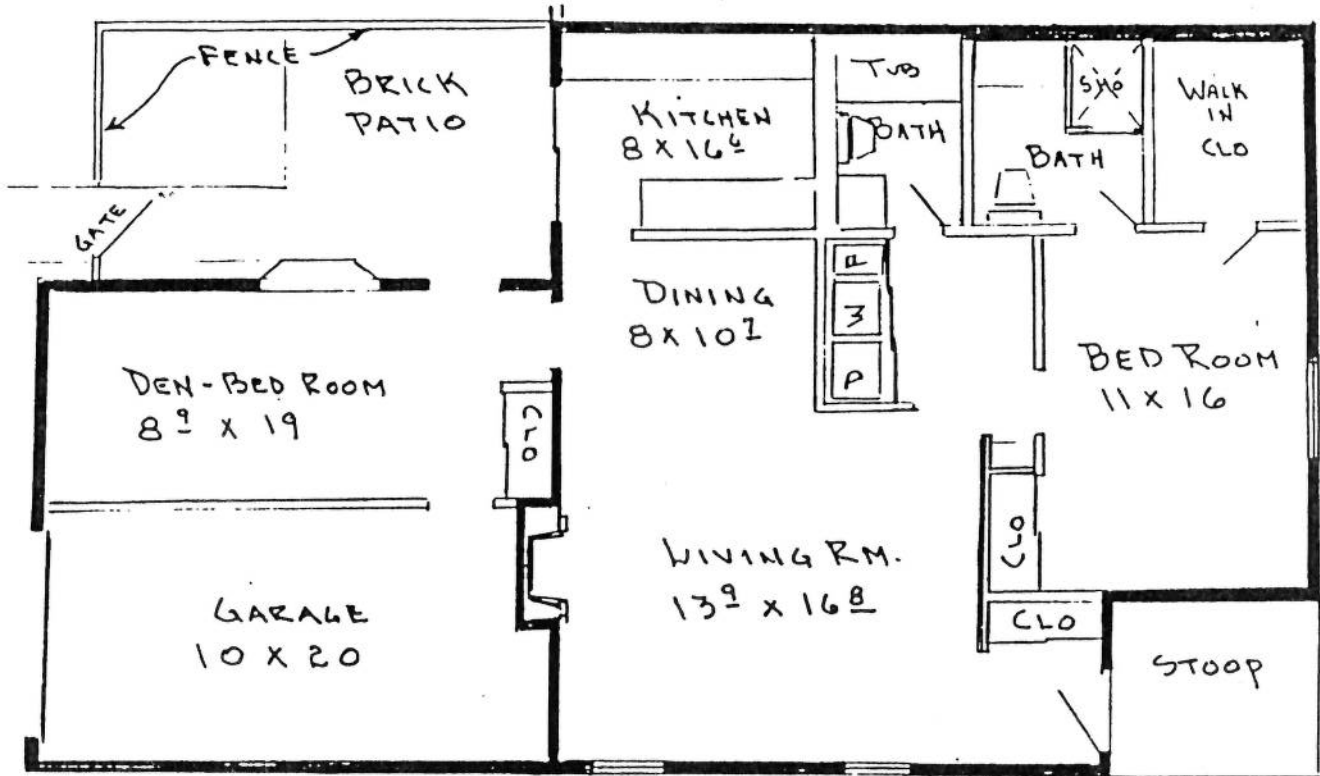
ALL ROOM SIZES ARE APPROXIMATE



**LONG & FOSTER**
REAL ESTATE, INC.

LEISURE WORLD PLAZA
3836 International Drive
Silver Spring, Maryland 20906
Office: 301-598-7500
Office Fax: 301-598-0395





BUCKINGHAM II "MODIFIED" SCALE $\frac{1}{8}'' = 1'-0''$

An elegant two bedroom single level home with a gracious foyer entry with guest closet. The living room has a wood-burning fireplace and cathedral ceiling. The separate dining room is large enough for a big dinner party. The total electric kitchen has enough cabinet space for a gourmet cook and luminous ceiling lights to make cooking a delight. Washer and dryer included, too. A full bath and an attached two-car garage complete the house. Outside: a private courtyard with concrete patio and landscaped lawns.

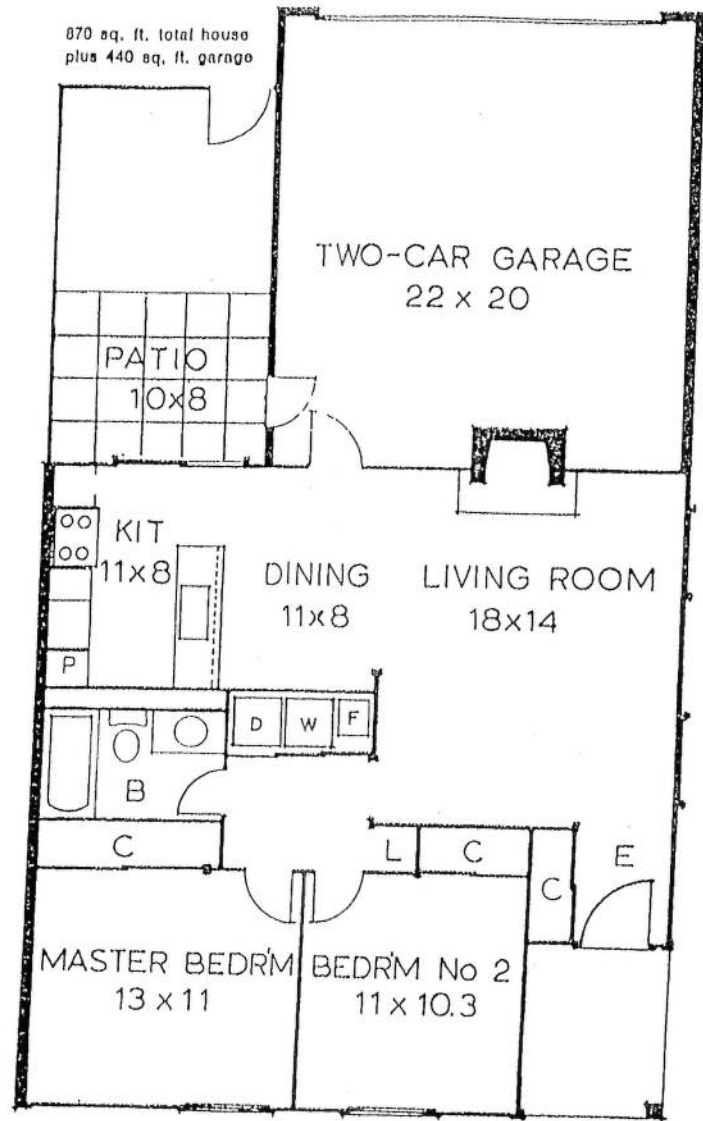


Leisure World Plaza Office
3836 International Drive
Silver Spring, MD 20906

AN AFFILIATE OF
CHRISTIE'S
INTERNATIONAL REAL ESTATE



Illustrations are artist's concepts and may vary in precise detail from plans and specifications. Room sizes are approximate. Prices and plans subject to change without notice.



BUCKINGHAM II

An elegant two bedroom single level home with a gracious foyer entry with guest closet. The living room has a wood-burning fireplace and cathedral ceiling. The separate dining room is large enough for a big dinner party. The total electric kitchen has enough cabinet space for a gourmet cook and luminous ceiling lights to make cooking a delight. Washer and dryer included, too. A full bath and an attached two-car garage complete the house. Outside: a private courtyard with concrete patio and landscaped lawns.

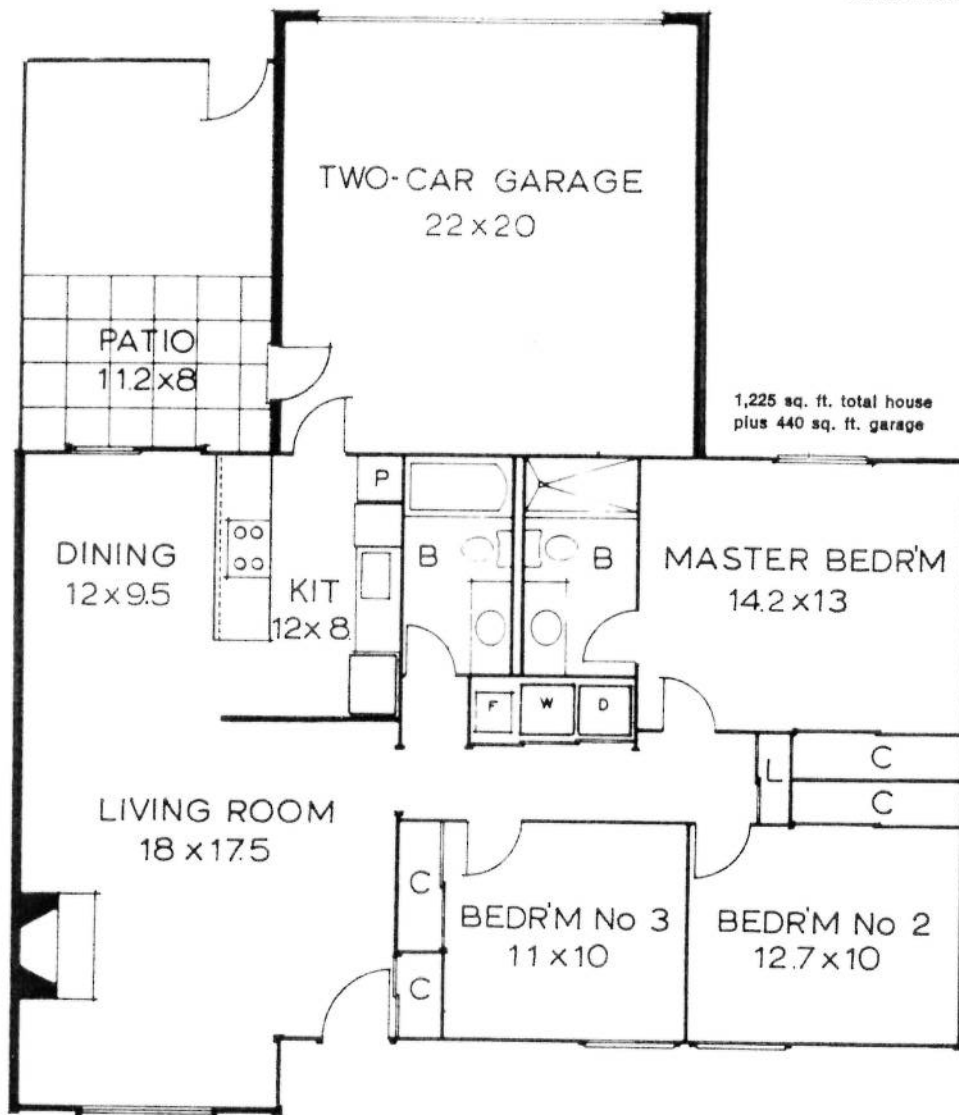


Office: 301-598-7500

Leisure World Plaza Office
3836 International Drive
Silver Spring, MD 20906



Illustrations are artist's concepts and may vary in precise detail from plans and specifications. Room sizes are approximate. Prices and plans subject to change without notice.



CABOT III

As you enter this spacious three bedroom, two full bath villa you will feel the luxuriousness. There's a guest closet at the entrance to the large living room, which has a warm wood-burning fireplace. Mansard roof available. The adjoining formal dining room is perfect for entertaining. The kitchen is fully equipped with electric appliances, lots of cabinets and luminous ceiling lights. A washer and dryer and an attached two-car garage complete the house. Outside: a private courtyard with concrete patio and landscaped lawns.



LEISURE WORLD PLAZA
3836 International Drive
Silver Spring, Maryland 20906
Office: 301-598-7500
Office Fax: 301-598-0395

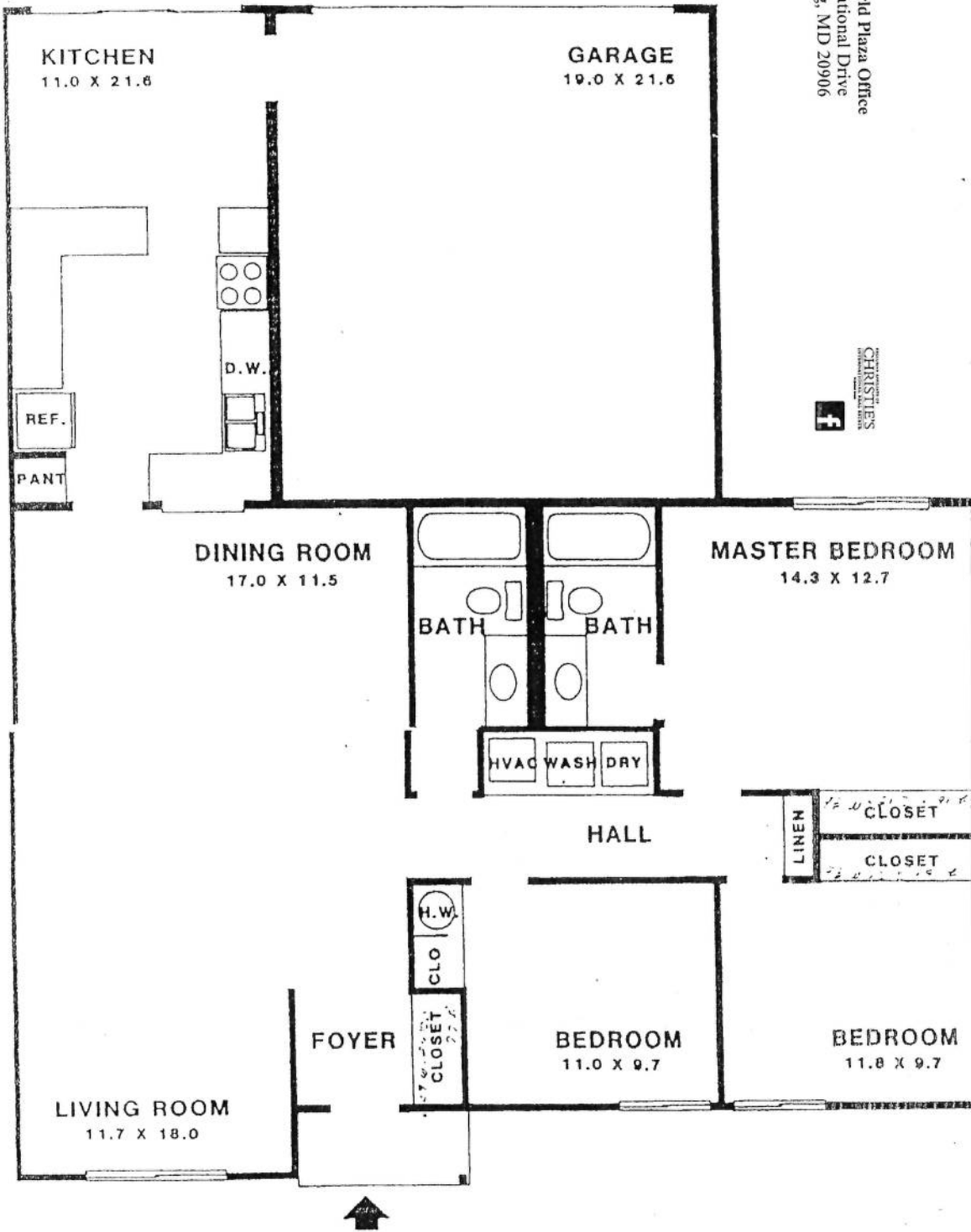


MODIFIED & ENLARGED CABOT

Leisure World Plaza Office
3836 International Drive
Silver Spring, MD 20906

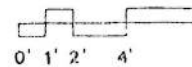


Office: 301-598-7500

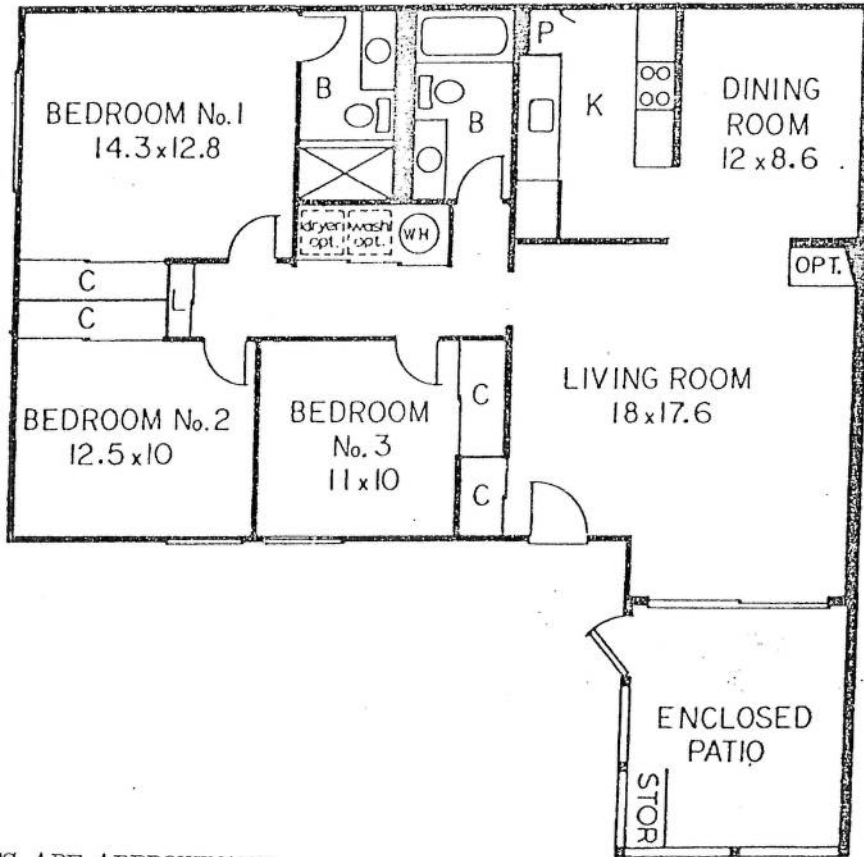


3 BEDROOMS, 2 BATHS

14925 PENNFIELD CIRCLE AS SHOWN
14927 PENNFIELD CIRCLE REVERSED
1529 SQ.FT. HOUSE, 425 SQ.FT. GARAGE



THE CAMBRIDGE



ALL ROOM SIZES ARE APPROXIMATE.



Office: 301-598-7500

Leisure World Plaza Office
 3836 International Drive
 Silver Spring, MD 20906

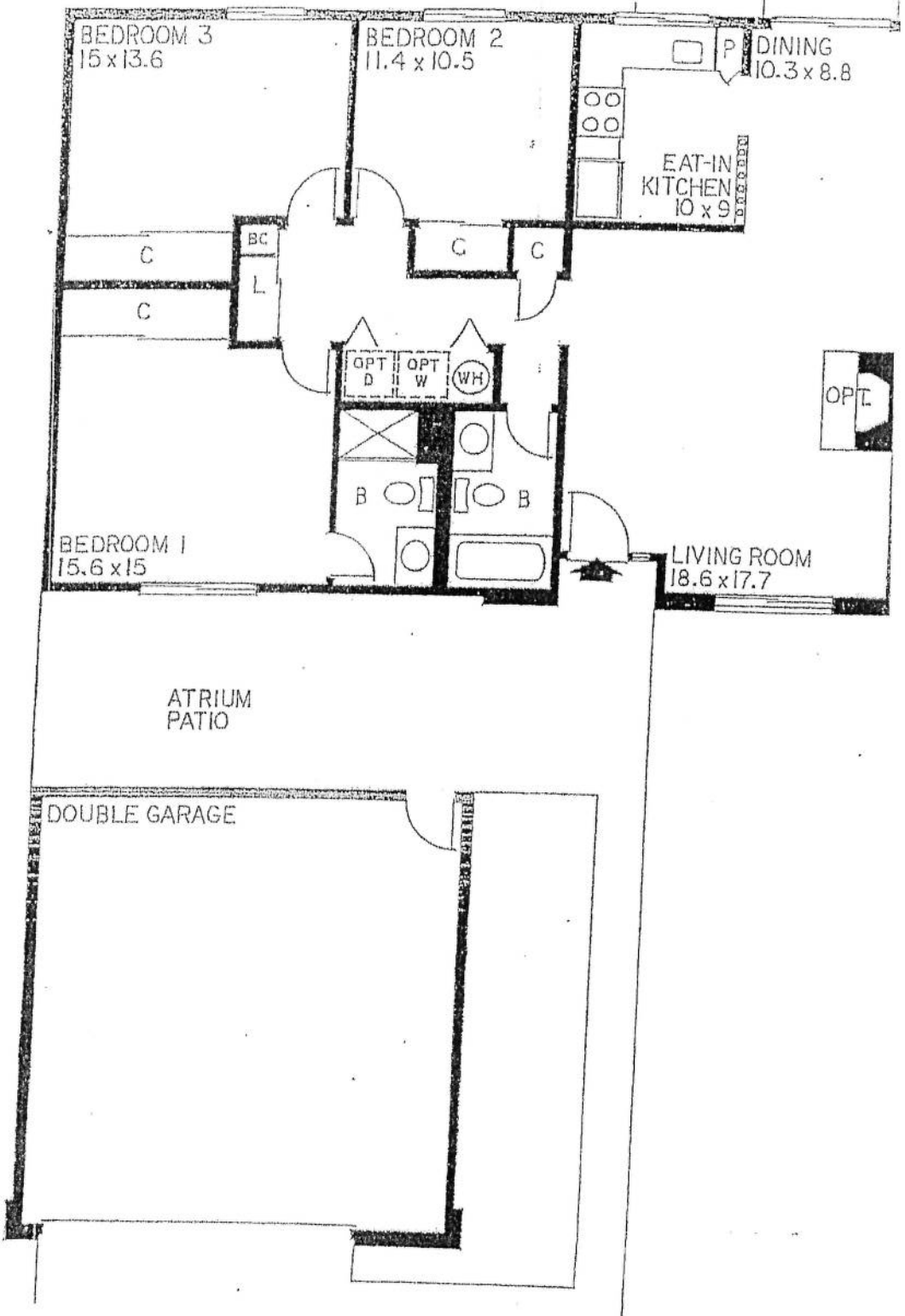


THE CHESAPEAKE PLAZA

Three Bedrooms, Two Baths, Two-Car Garage

OPT. PATIO

ALL ROOM SIZES ARE APPROXIMATE



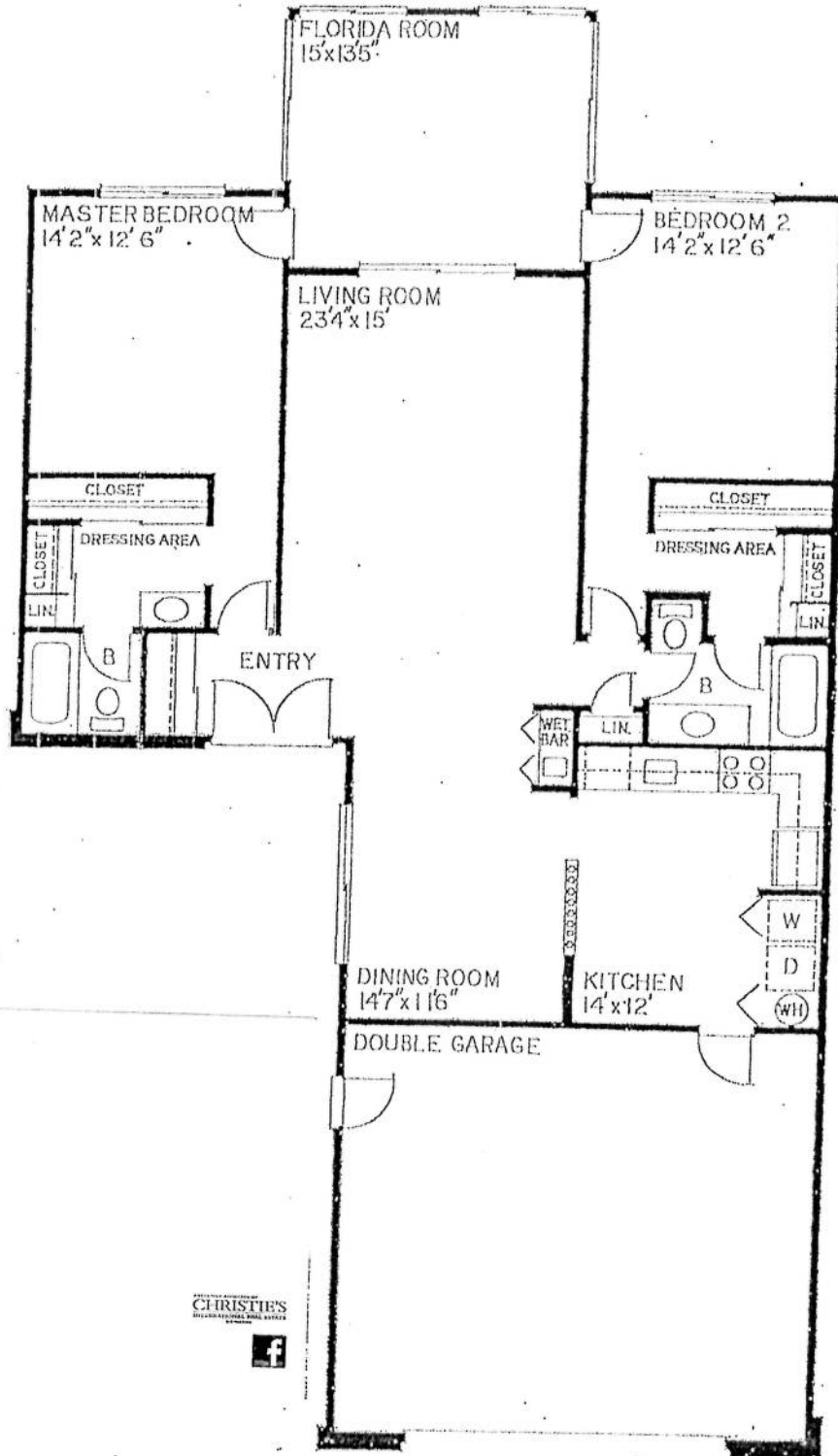
Leisure World Plaza Office
3836 International Drive
Silver Spring, MD 20906



THE HUNTINGTON

Two Bedrooms, Two Baths, Two Car Garage

ALL ROOM SIZES ARE APPROXIMATE



isure World Plaza Office
336 International Drive
ilver Spring, MD 20906



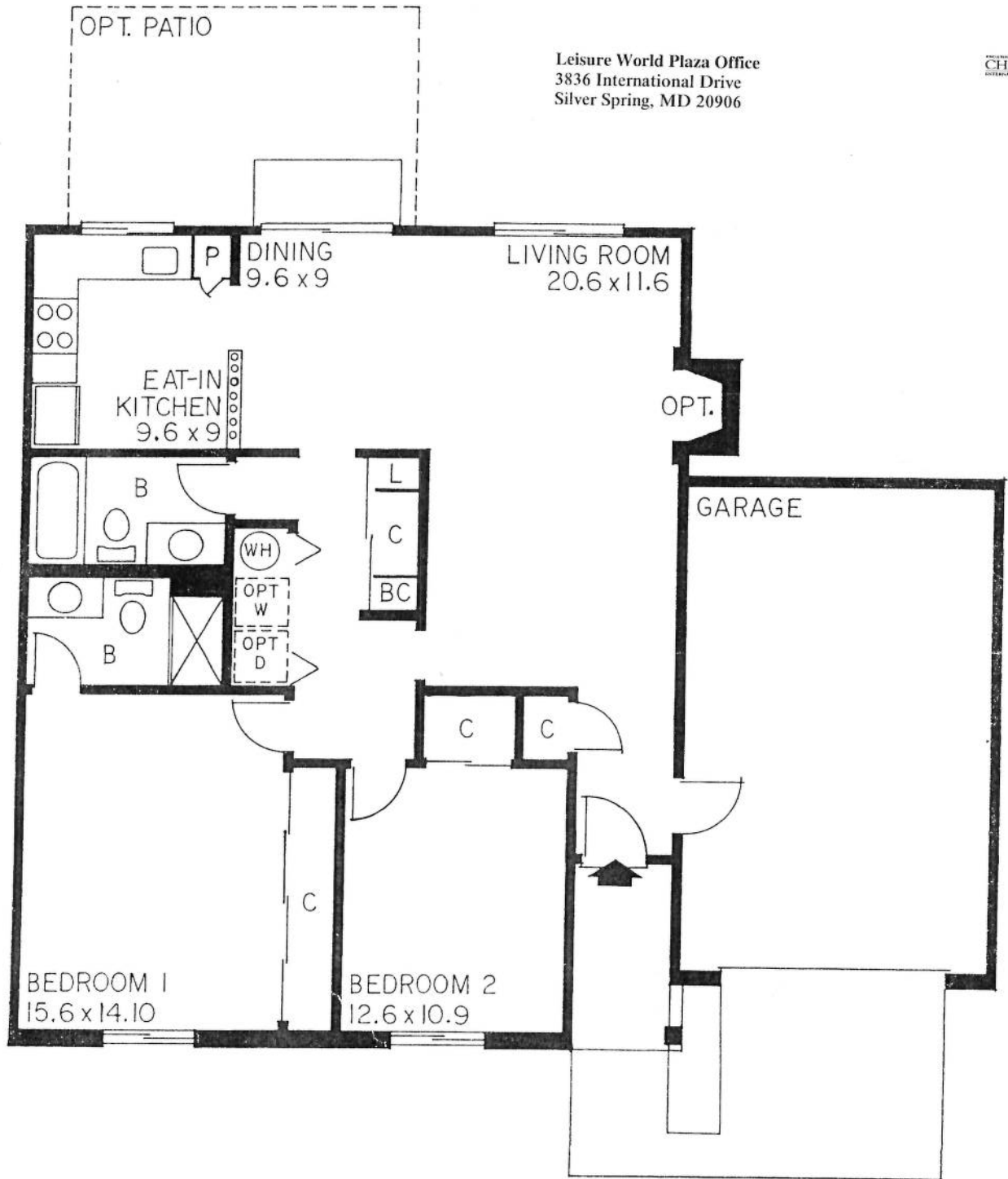
THE OXFORD PLAZA

Two Bedrooms, Two Baths, Garage



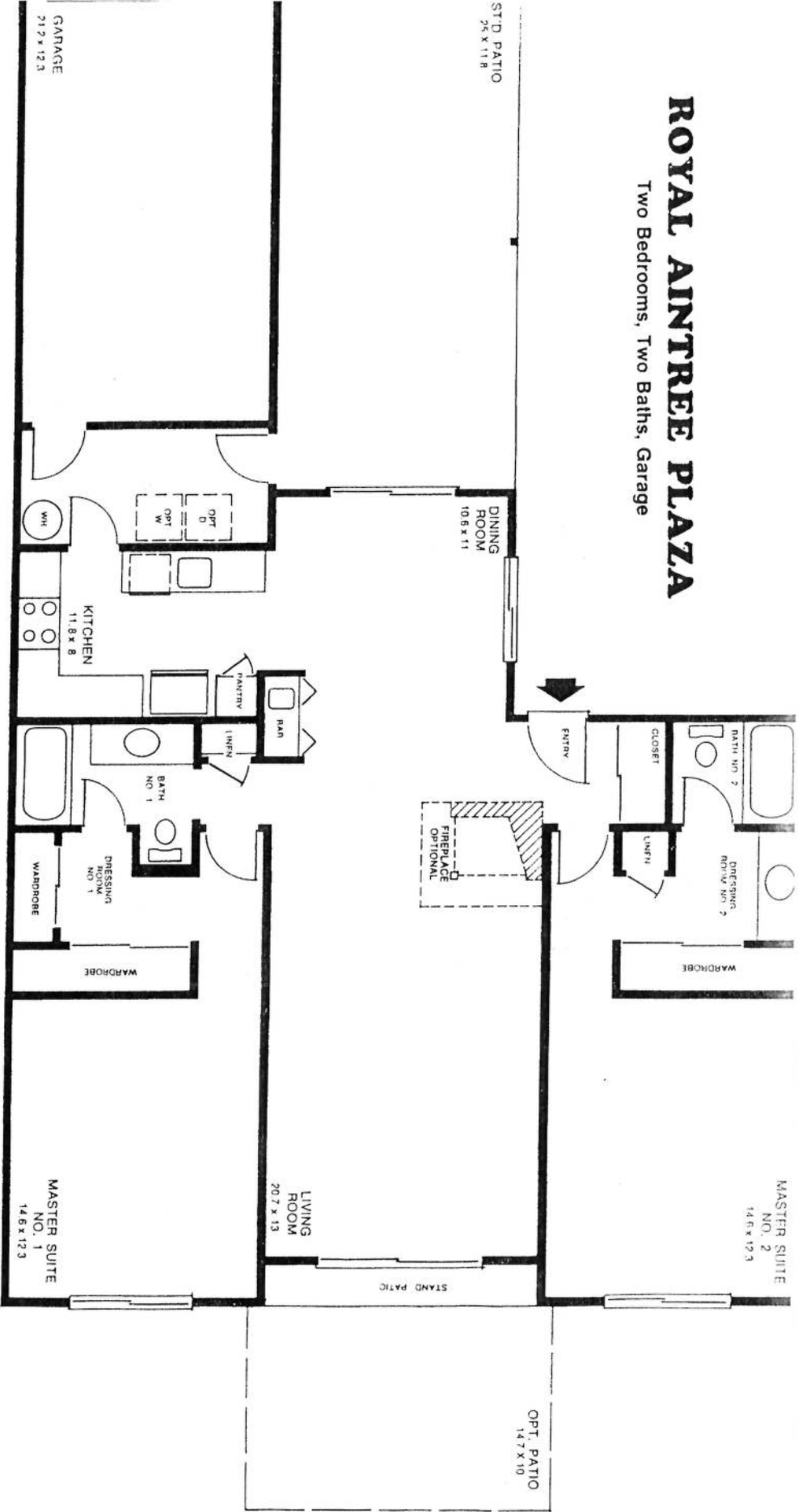
ALL ROOM SIZES ARE APPROXIMATE

Leisure World Plaza Office
3836 International Drive
Silver Spring, MD 20906



ROYAL AINTREE PLAZA

Two Bedrooms, Two Baths, Garage



All dimensions & illustrations are approximate



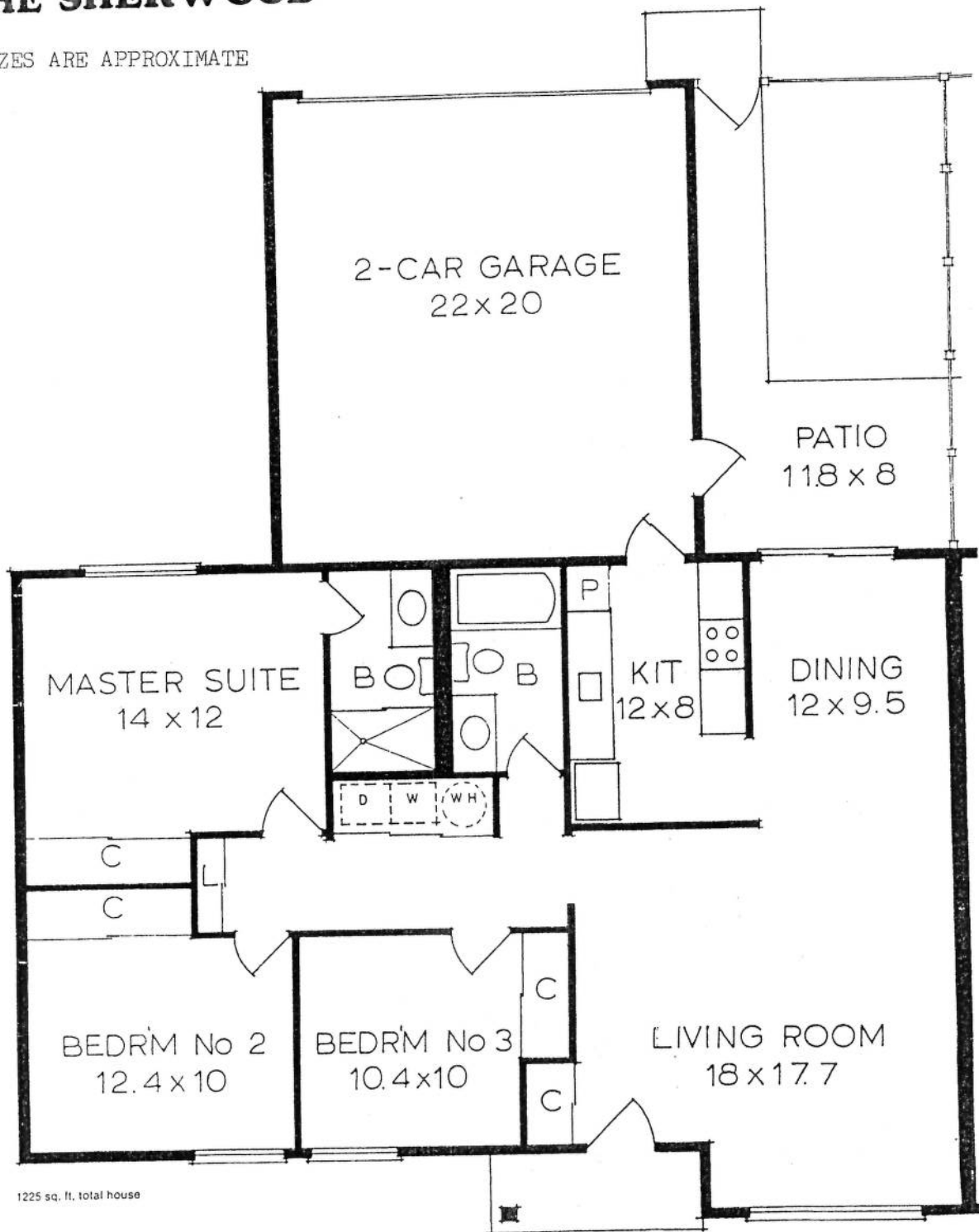
Office: 301-598-7500

Leisure World Plaza Office
 3836 International Drive
 Silver Spring, MD 20906



THE SHERWOOD — 3 Bedrooms, 2 Baths, Double Garage

ALL ROOM SIZES ARE APPROXIMATE



1225 sq. ft. total house

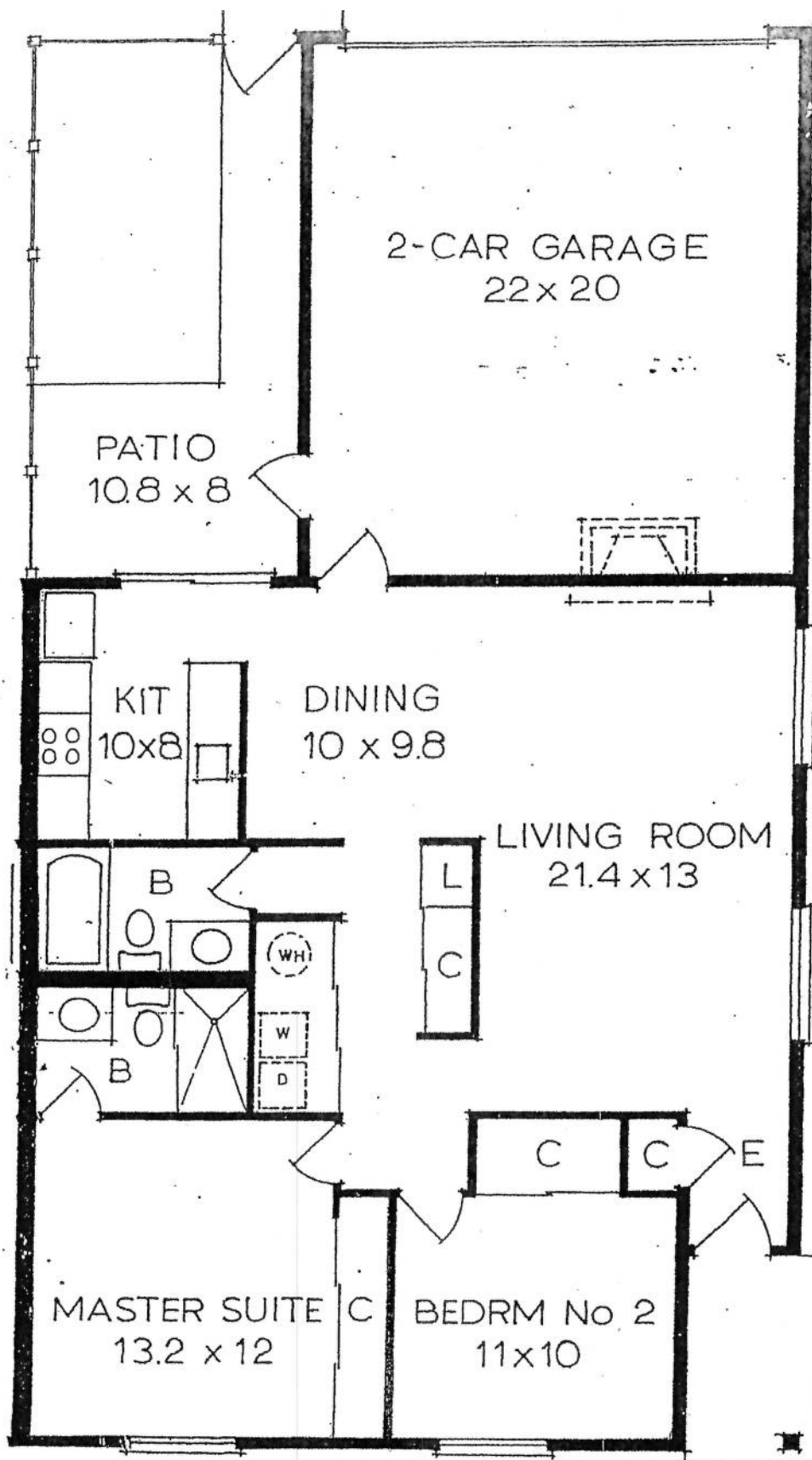


Office: 301-598-7500

Leisure World Plaza Office
3836 International Drive
Silver Spring, MD 20906

REAL ESTATE AFFILIATE OF
CHRISTIE'S
INTERNATIONAL REAL ESTATE





THE NOTTINGHAM — 2 Bedrooms, 2 Baths, Double Garage

1058 sq. ft. total house